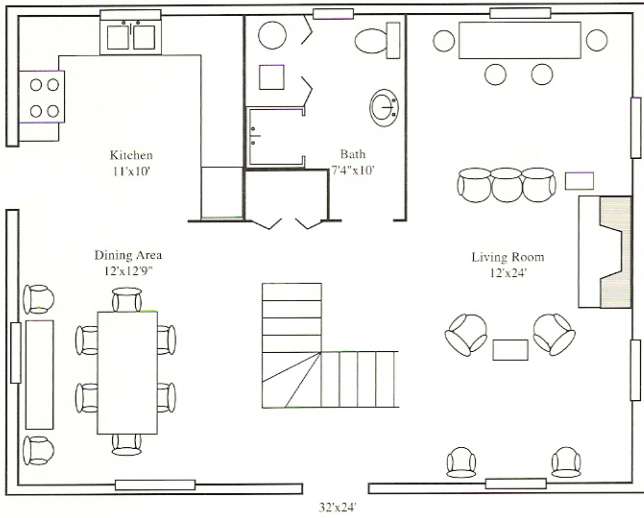
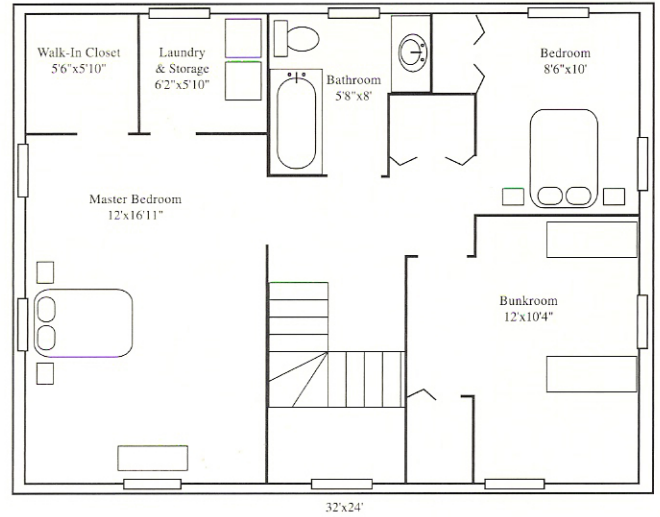


FIRST FLOOR PLAN



SECOND FLOOR PLAN



Both the Haliburton and Settler Cottages have the same floor plans. The cottages are spacious, comfortable and designed for vacation living.

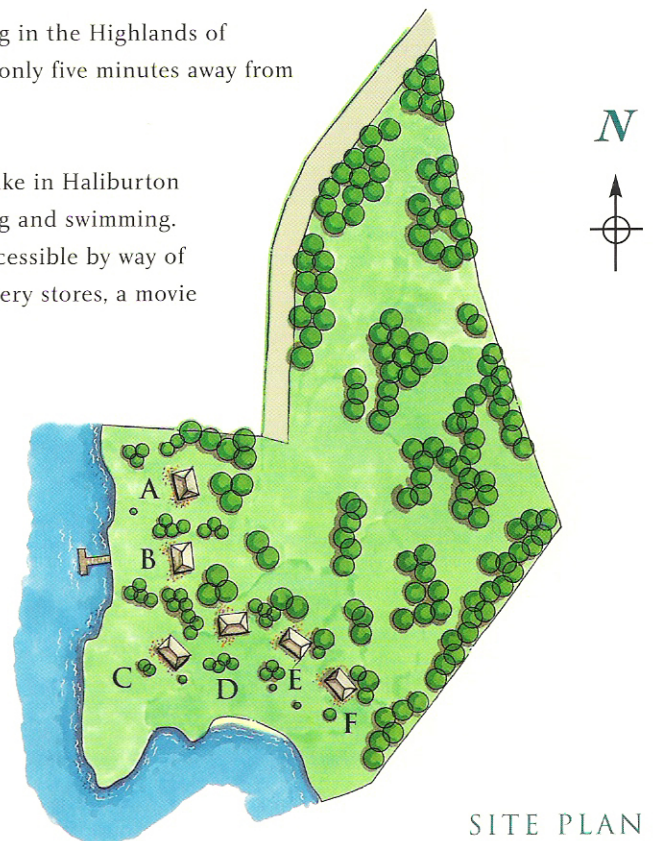
THE PROPERTY

Chandler Point has over 800 feet of scenic shoreline. The natural sand beach has a southwest exposure that makes it ideal for swimming. The property is well treed so that each cottage will have considerable privacy. Each cottage will have its own unobstructed view of the lake.

Chandler Point is located on the south shore of Lake Kashagawigamog in the Highlands of Haliburton. Approximately 200 kilometers northeast of Toronto, it is only five minutes away from the Village of Haliburton.

Lake Kashagawigamog is perhaps the best known and most popular lake in Haliburton County. Part of a five-lake chain, it offers miles of recreational boating and swimming. There are five golf courses nearby and the Village of Haliburton is accessible by way of road or water. Haliburton Village has restaurants, antique shops, grocery stores, a movie theatre, and many other retail outlets.

Haliburton is an active "four seasons" community. There are a number of cross-country ski-trails in the area and downhill skiing at Sir Sam's Inn is just 20 minutes away from Chandler point. As well, Haliburton County has miles and miles of groomed snowmobile trails.



SITE PLAN

